

MONTHLY MEMBERSHIP PROGRESS REPORT

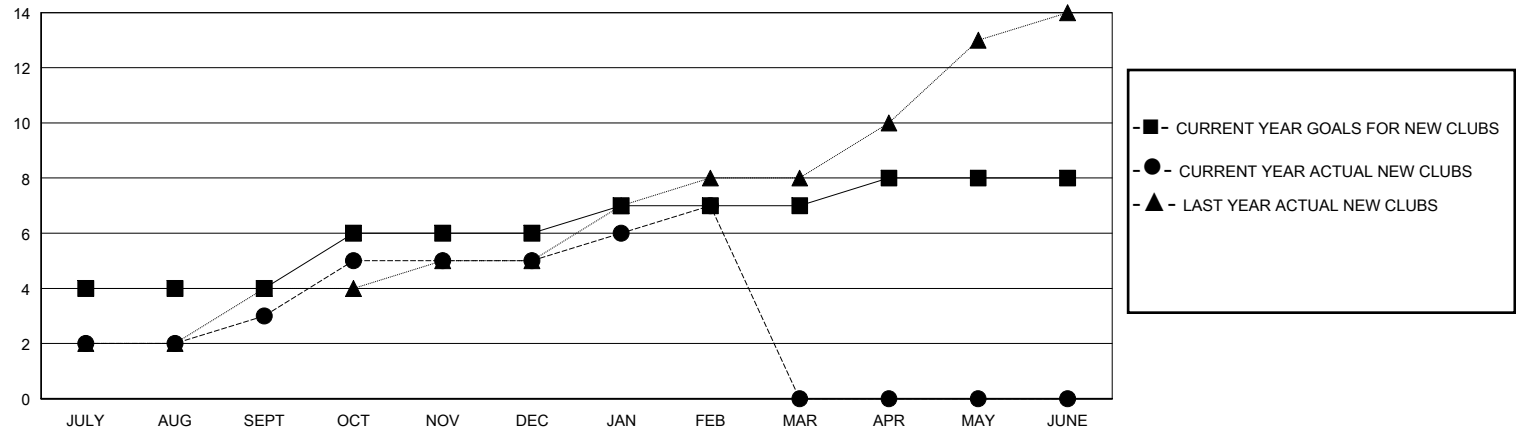
District 307B1

Results as of: 2/28/2025

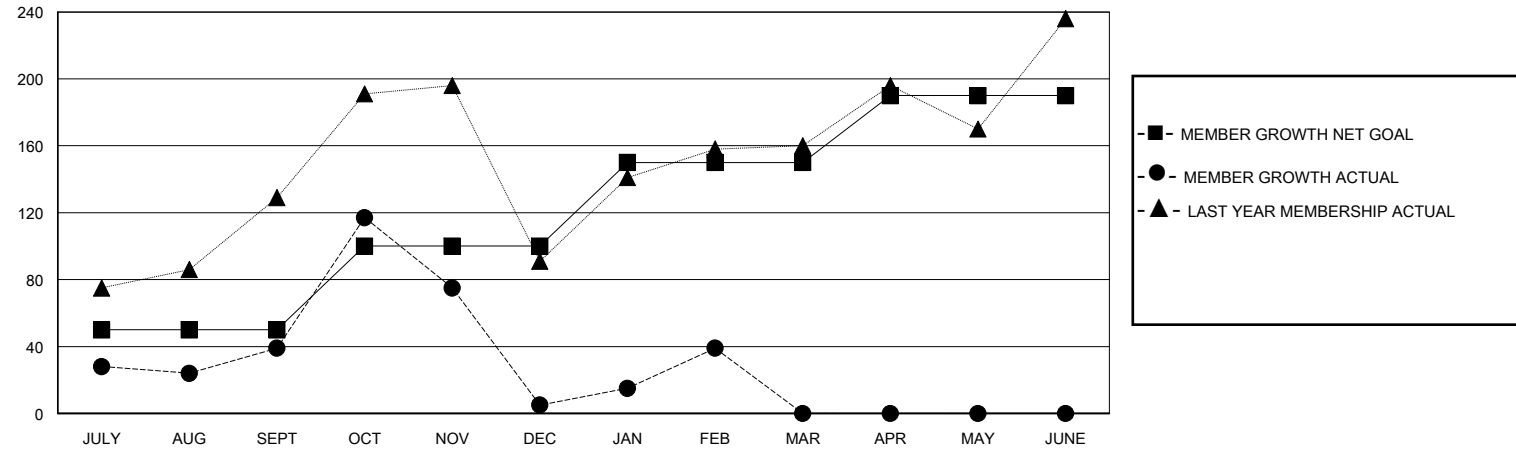
GMT: LOCATION INDONESIA GMT CA

| Clubs                 |               |           |               | Members               |                        |                      |                                              |
|-----------------------|---------------|-----------|---------------|-----------------------|------------------------|----------------------|----------------------------------------------|
| RESULTS FOR 2024-2025 |               |           |               | RESULTS FOR 2024-2025 |                        |                      |                                              |
| QUARTER               | NEW CLUB GOAL | NEW CLUBS | DROPPED CLUBS | QUARTER               | MEMBER GROWTH NET GOAL | MEMBER GROWTH ACTUAL | DROPPED MEMBERS ACTUAL (including transfers) |
| JULY/AUG/SEPT         | 4             | 3         | 0             | JULY/AUG/SEPT         | 50                     | 162                  | 114                                          |
| OCT/NOV/DEC           | 2             | 2         | 2             | OCT/NOV/DEC           | 50                     | 193                  | 161                                          |
| JAN/FEB/MAR           | 1             | 2         | 0             | JAN/FEB/MAR           | 50                     | 63                   | 22                                           |
| APR/MAY/JUNE          | 1             | 0         | 0             | APR/MAY/JUNE          | 40                     | 0                    | 0                                            |

GOALS AND ACTUAL NEW CLUBS CUMULATIVE



GOALS AND ACTUAL MEMBERS CUMULATIVE



|                        |  |                                                           |                                   |                |
|------------------------|--|-----------------------------------------------------------|-----------------------------------|----------------|
| DROPPED CLUBS: 2       |  | 53 CLUBS OF 98 ADDED 1 OR MORE NEW MEMBERS                | <u>GENDER DISTRIBUTION</u>        |                |
| <u>DROPPED MEMBERS</u> |  |                                                           | MALE                              | 816 (35.49%)   |
| DECEASED 2             |  | <a href="#">CLICK HERE FOR CUMULATIVE MEMBERSHIP DATA</a> | FEMALE                            | 1,483 (64.51%) |
| CLUB CANCELLED 4       |  |                                                           | TOTAL FAMILY UNIT MEMBERS 0       |                |
| OTHER 289              |  |                                                           | FAMILY MEMBERS PAYING HALF DUES 0 |                |
| TOTAL 295              |  |                                                           |                                   |                |